



## CIRCLE

The Center for Information & Research on  
Civic Learning & Engagement

### Quick Facts About Young Voters in Maryland: The Primary Election Year 2008

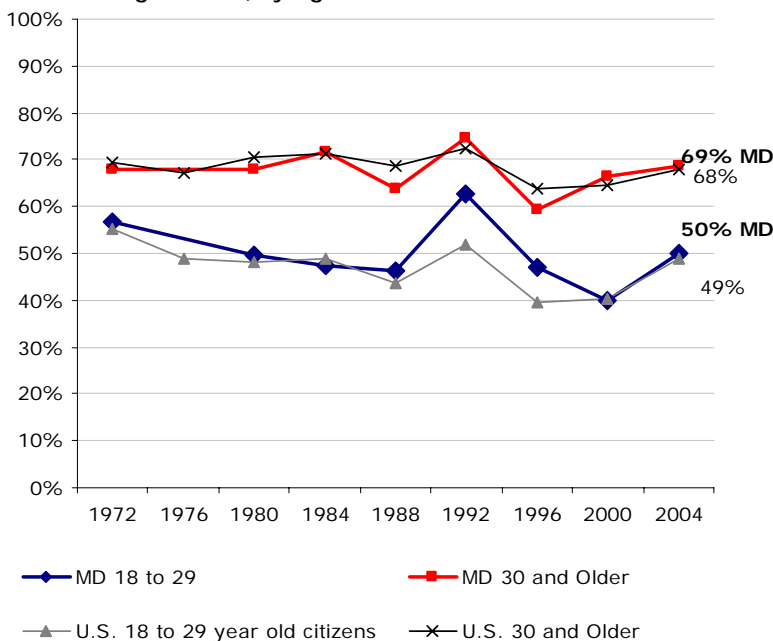
By Karlo Barrios Marcelo<sup>1</sup>  
February 2008

Maryland's young voters are diverse and its college students will play a key role in the February 12<sup>th</sup> primary. This fact sheet presents information on young people's voter turnout rates and selected demographics.

**Table 1 – 2008 Maryland Citizens' Educational Attainment, by Age**

	Ages 18-29	Ages 30+
Less than High School	22%	11%
High School	29%	28%
Some College	32%	24%
Bachelor or higher	18%	37%

**Figure 1: Maryland Voter Turnout in Presidential Years Among Citizens, by Age**



Source: Author's tabulations from the Current Population Survey, November (Voting) Supplements, 1972-2004. No 1976 data for MD.

**Table 2 – 2008 Maryland Citizens' Population Estimates, Race/Ethnicity, and Student Status, by Age**

	Total Population	Share of Ages 18+	White non-Hispanic	Black non-Hispanic	Other Race/Ethnicity	College Student
<b>Ages 18-29</b>	<b>804,880</b>	<b>21%</b>	<b>54%</b>	<b>36%</b>	<b>9%</b>	<b>24%</b>
Ages 30+	3,096,625	79%	68%	25%	7%	N/A

Source for Tables 1 and 2: Author's tabulations from the Current Population Survey, March (Demographic) Supplement, 2007. To project 2008 population estimates for ages 18-29 and 30+, I allow for a one-year difference (17-28 and 29+) when using 2007 data. 2007 estimates for ages 18-29 and 30+ are available upon request.

#### Notes

<sup>1</sup> Research Associate. I thank Peter Levine and Emily Kirby for comments on previous drafts of this fact sheet. All errors in fact or interpretation are my own.