

Quick Facts about Young Voters in Ohio

Below are selected characteristics for Ohio including estimates of the number of young voters, registration and voter turnout rates both for the state and the nation, and other election- and demographic-related information about citizens age 18-29.

2014 MIDTERM

2012 PRESIDENTIAL

| | OH | | US | | | OH | | US | |
|---------------------------|-------|-------|-------|-------|---------------------------|-------|-------|-------|--------|
| | 18-29 | 30+ | 18-29 | 30+ | | 18-29 | 30+ | 18-29 | 30+ |
| Voter Turnout | 11.6% | 42.5% | 13.0% | 42.9% | Voter Turnout | 49.7% | 70.0% | 38.9% | 64.2% |
| Youth Share | 6.6% | 93.4% | 7.6% | 92.4% | Youth Share | 15.6% | 84.4% | 11.6% | 88.4% |
| Votes Cast (in thousands) | 209 | 2946 | 6274 | 76457 | Votes Cast (in thousands) | 890 | 4828 | 15044 | 114449 |

(CIRCLE analysis of Catalist Voter File and U.S. Census American Community Survey¹)

YOUTH DEMOGRAPHICS

(Citizens age 18 to 29— CIRCLE analysis of U.S. Current Population Survey March 2015 Supplement)

| Citizen Population | OH | US | Race | OH | US | Gender / Family | OH | US | | | |
|----------------------------|-----------------------------|---------|------------------------------------|-------|------------------|--------------------------|-------|-------|-------------|-------|-------|
| | Total (in millions for 18+) | 8.6 | | 221 | African American | | 12.3% | 14.0% | Women | 52.1% | 50.3% |
| Youth 18-29 (in thousands) | 1733 | 46648.5 | Asian American | 1.2% | 5.8% | Men | 47.9% | 49.7% | | | |
| Youth Share | 20.2% | 21.1% | Latino | 4.2% | 21.0% | Married | 23.5% | 17.1% | | | |
| College Experience | OH | US | Native American ^a | ** | 1.1% | Have Children (under 18) | 26.3% | 18.5% | | | |
| | | | Native Hawaiian ^b | ** | .4% | | | | | | |
| | | | White | 78.0% | 55.6% | | | | Immigration | OH | US |
| | | | Other | 4.2% | 2.1% | | | | | | |
| No College | 45.8% | 40.4% | Born outside of U.S. | 1.4% | 4.5% | | | | | | |
| Some College | 54.2% | 59.6% | Have a parent born outside of U.S. | 2.8% | 20.6% | | | | | | |

^a includes Native Alaskans / ^b includes Pacific Islanders

YOUTH VOTER TURNOUT

(CIRCLE Analyses of CPS Nov. Supplements)

| | 2014 | | 2012 | |
|------------------------|-------|-------|-------|-------|
| | OH | US | OH | US |
| Voters 18-21 years old | 15.9% | 15.1% | 42.9% | 38.3% |
| African American | ** | 22.9% | ** | 53.1% |
| Asian American | ** | 12.6% | ** | 37.1% |
| White | 18.9% | 19.8% | 47.9% | 44.1% |
| Latino | ** | 13.8% | ** | 36.9% |
| Men | 17.7% | 18.3% | 47.5% | 41.5% |
| Women | 18.0% | 21.3% | 52.6% | 48.6% |

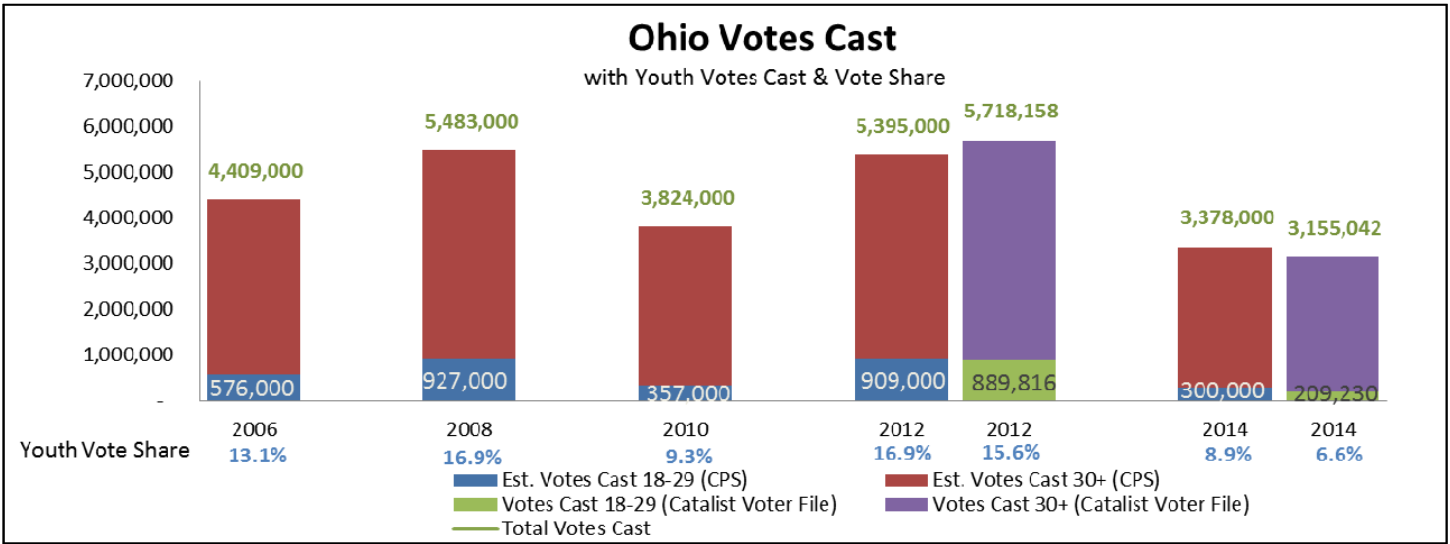
POLITICAL CLIMATE

| Governor | |
|-----------------------------|-------------------------|
| Republican | |
| State Senate | State House |
| Republican Control | Republican Control |
| 10 (D) / 23 (R) / 0 (O) | 34 (D) / 65 (R) / 0 (O) |
| Battleground State in 2016? | |
| Tossup | |

(Sources: MultiState.com and average of Cook Political Report (8/12/15), Rothenberg & Gonzales (3/6/15), and Sabato Crystal Ball (5/12/15))

¹We calculate voter turnout by dividing the estimated number of votes cast by estimated total citizen population. We gather data from three sources: **Exit Polls** to estimate the youth vote share, which is in turn used to calculate the number of youth votes cast (% youth share x total votes cast, based on **Federal Election Commission** reporting); **The American Community Survey** to estimate youth citizen population.

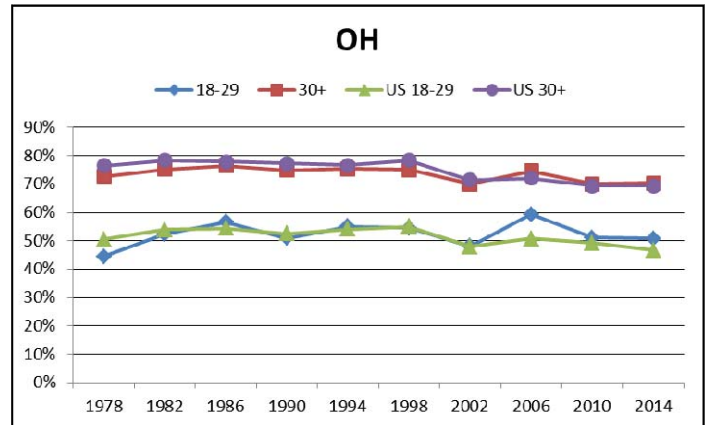
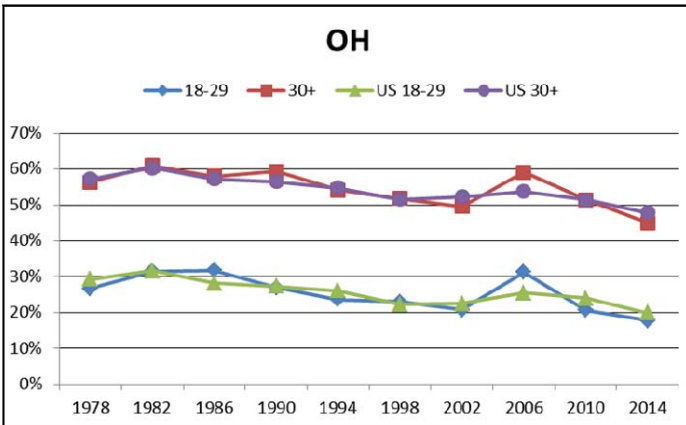
The bar graph below shows vote 2006-2014. For 2012 and 2014, we can provide youth vote counts tallies from Catalist (which aggregates voter file information) and we include them here because the voter file is the most accurate data source about vote counts than any survey measure. For the states that have age-related data available, the bar graph also displays the youth vote counts. Other estimates in the graph are from Census Current Population Survey (CPS). The line graphs track the CPS-based voting and registration trends by age over time and how they track with the national average. We recommend only using line graphs to understand trends and calculating or estimating or specifying the percentage estimates by looking at the line graph.



MIDTERM ELECTIONS

Voter Turnout Rate

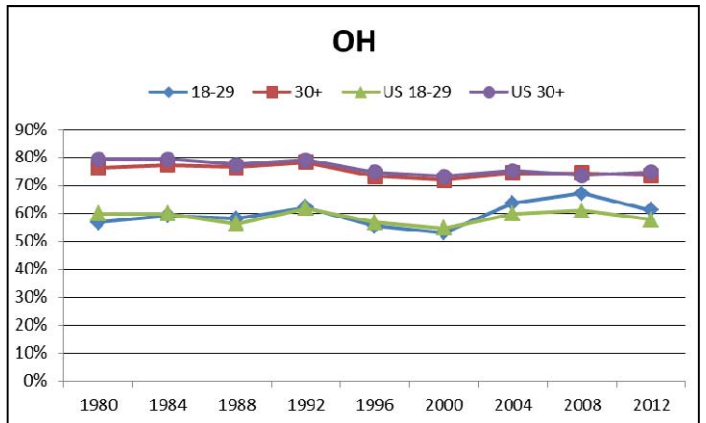
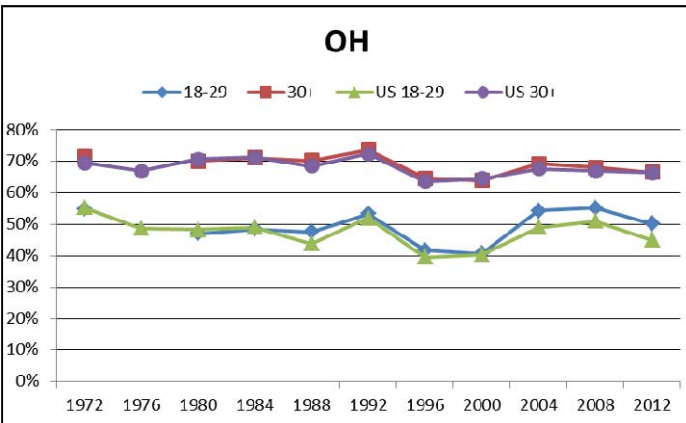
Voter Registration Rate



PRESIDENTIAL ELECTIONS

Voter Turnout Rate

Voter Registration Rate



CIRCLE (The Center for Information and Research on Civic Learning & Engagement) is the leading source of authoritative research on the civic and political engagement of young Americans, especially those who are marginalized or disadvantaged. It is housed at the Jonathan M. Tisch College of Citizenship and Public Service at Tufts University.

